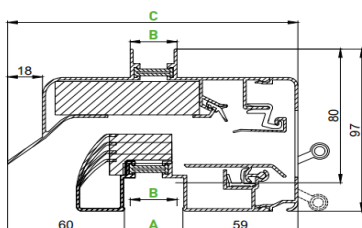
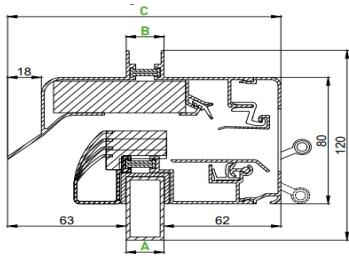


# TECHNICAL DATA SHEET

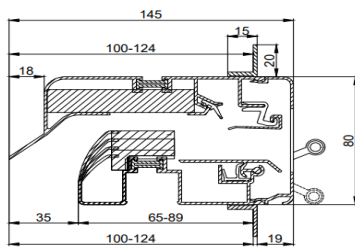
<b>TYPE</b>	<b>GLASMAX SR</b>				
<b>DESCRIPTION</b>	Window ventilator, suitable for use with aluminium, PVC or timber windows.				
<b>SELF-REGULATING</b>	Yes				
<b>GLASS REDUCTION</b>	80 mm				
<b>EQUIVALENT AREA</b>	Air slot 10 mm : 20233 mm <sup>2</sup> /m @ 1 Pa Air slot 15 mm : 26850 mm <sup>2</sup> /m @ 1 Pa Air slot 20 mm : 30667 mm <sup>2</sup> /m @ 1 Pa Air slot 25 mm : 36394 mm <sup>2</sup> /m @ 1 Pa				
<b>GEOM. FREE AREA</b>	Air slot 10 mm : 10000 mm <sup>2</sup> /m Air slot 15 mm : 15000 mm <sup>2</sup> /m Air slot 20 mm : 20000 mm <sup>2</sup> /m Air slot 25 mm : 25000 mm <sup>2</sup> /m				
<b>AIRFLOW</b>	Air slot 10 mm : 65,6 m <sup>3</sup> /h/m @ 2 Pa Air slot 15 mm : 88,4 m <sup>3</sup> /h/m @ 2 Pa Air slot 20 mm : 109,3 m <sup>3</sup> /h/m @ 2 Pa Air slot 25 mm : 123,9 m <sup>3</sup> /h/m @ 2 Pa				
<b>GLASS THICKNESS</b>	20, 24, 28, 32 mm				
<b>TRANSOM</b>	20 or 24 mm				
<b>SOUND REDUCTION</b>	Air slot 10 mm : 37 (-1;-3) dB Dne,W (C;Ctr) in open position Air slot 15 mm : 35 (-1;-2) dB Dne,W (C;Ctr) in open position Air slot 20 mm : 34 (0;-2) dB Dne,W (C;Ctr) in open position Air slot 25 mm : 27 (0;-1) dB Dne,W (C;Ctr) in open position				
<b>OCTAVE BAND VALUES</b>	<b>at 125 Hz</b>	<b>at 250 Hz</b>	<b>at 500 Hz</b>	<b>at 1000 Hz</b>	<b>at 2000 Hz</b>
Air slot 10 mm	33,7 dB	31,1 dB	28,6 dB	39,2 dB	46,4 dB
Air slot 15 mm	32,9 dB	31,0 dB	27,9 dB	36,2 dB	40,5 dB
Air slot 20 mm	33,2 dB	31,1 dB	27,9 dB	34,8 dB	38,6 dB
Air slot 25 mm	24,7 dB	26,7 dB	24,9 dB	26,8 dB	28,0 dB
<b>WIND TIGHTNESS</b>	Class 3 (600 Pa) in closed position				
<b>WATER TIGHTNESS</b>	Class E1050 (1050 Pa) in closed position				
<b>CONTROL OPTIONS</b>	Handle, Cord or Rod				
<b>U-VALUE</b>	1,56 W/m <sup>2</sup> K				
<b>MAXIMUM LENGTH</b>	4000 mm (transom/compact transom) / 2500 mm (glazed-in) Maximum flap length : 2000 mm				
<b>INSTALLATION HEIGHT</b>	90 mm for compact transom installation				
<b>VENTILATOR HEIGHT</b>	120 mm for compact transom installation 120 mm for transom installation 97 mm for glazed-in installation				
<b>MATERIAL</b>	Aluminium : AlMg Si 0.5 Plastic parts : ASA or ABS				
<b>SURFACE TREATMENT</b>	- DAR (Duco Anodic Ral) - Polyester powder coated (60-80µm) in Duco300RAL - Specific RAL colour and/or texture on demand - Dual colour available				



FITTING OVER THE GLASS		
Glass profile (A)	Glass thickness (B)	Vent depth (C)
26 mm	20 mm	145 mm
30 mm	24 mm	149 mm
34 mm	28 mm	153 mm
38 mm	32 mm	157 mm



TRANSOM		
Transom profile (A)	Top section (B)	Vent depth (C)
40 x 20 mm	20	145
40 x 25 mm	24	149



**COMPACT TRANSOM**